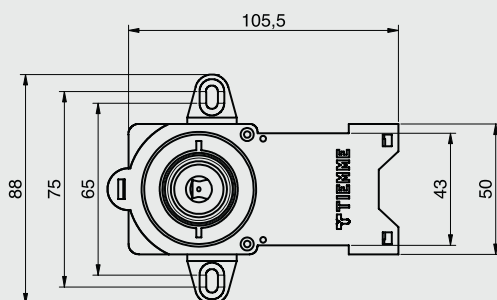
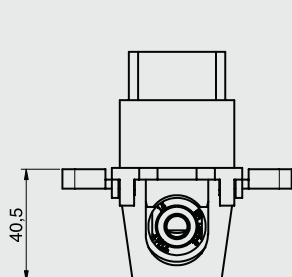
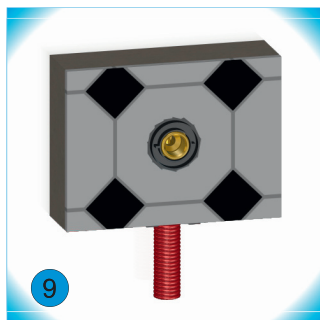
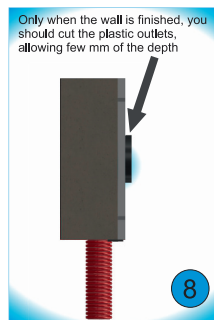
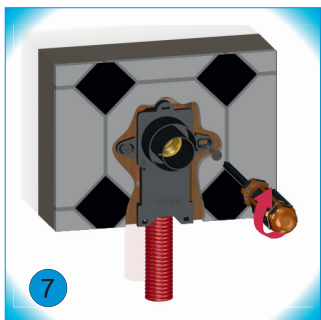
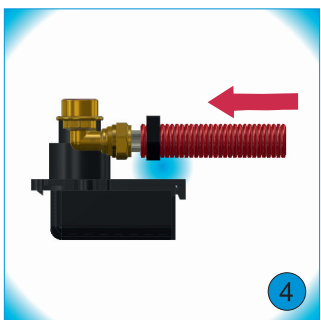
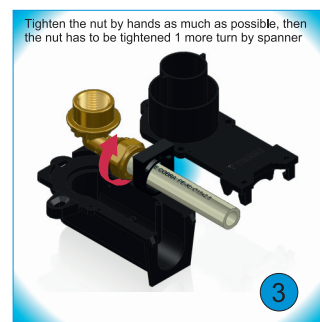
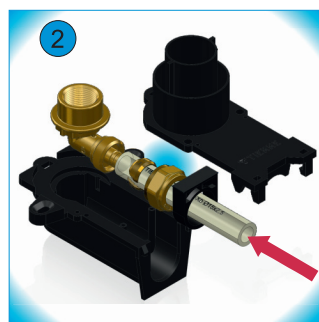


PEX Kopplingsbox PEX Koblingsboks PEX Liitántärasia PEX Koblingsdåse

15 x 2,5 mm



Technical Features

Maximum temperature + 95°C
Minimum temperature - 20°C
Maximum operating pressure 10 bar
Female thread 1/2" ISO 228

Description

Plastic box
Fitting

Material

ABS
CW602N - EN12165 brass
(brass resistant to dezincification)

Certifications

ETA approved

